

P/2 DA2 WM F Series

Wall-Mountable Two Output VGA Distribution Amplifiers with Audio



COMMON FEATURES

- Input: One female 15-pin HD connector and 3.5 mm stereo mini jack
- Outputs: Two buffered female 15-pin HD connectors and captive screw connectors
- 300 MHz (-3 dB) RGB video bandwidth, fully loaded
- Compatible with VGA-QXGA resolutions
- Three position peaking/gain control helps maintain signal integrity over long cable runs
- Balanced or unbalanced audio output
- Active PC audio interfacing
- ID bits routed to local monitor output
- ID bit termination provided
- Dual color power/signal LED
- External universal power supply included, part # 70-055-01

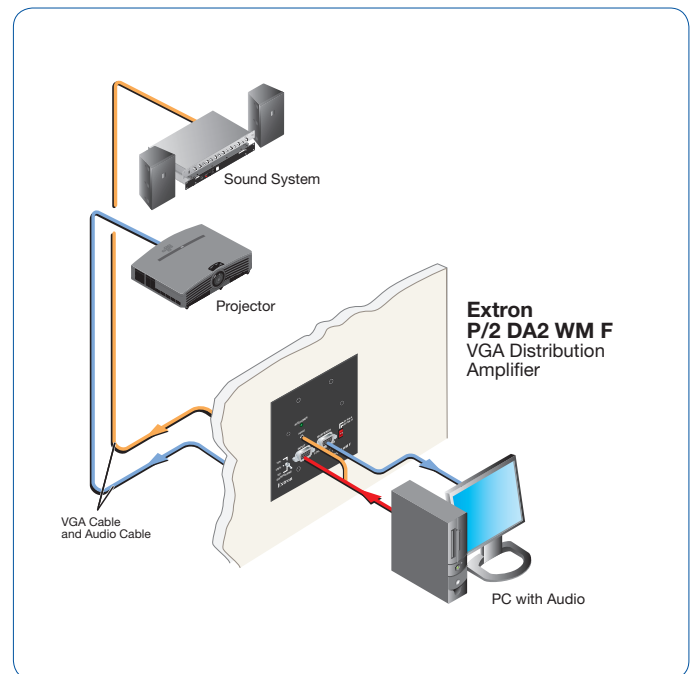
DESCRIPTION

The Extron **P/2 DA2 WM F** is a wall-mountable, one input, two output, high resolution VGA distribution amplifier with audio. With 300 MHz (-3 dB) RGB video bandwidth, the P/2 DA2 WM F is compatible with VGA-QXGA graphic cards, projectors and flat panel displays. Each VGA output is individually buffered. The P/2 DA2 WM F accepts computer-video on a 15-pin HD female connector.

Enclosed in a two-gang box, the P/2 DA2 WM F comes with a black, white, or RAL9010 white wall plate and fits flush into a wall, podium, or table.

The P/2 DA2 WM F is available in an EC model, the **P/2 DA2 EC F**, that is compatible with European channel mounting systems.

The **P/2 DA2 WM F AAP** and **P/2 DA2 EC F AAP** include openings for up to four Extron single space AAP - Architectural Adapter Plates. There are hundreds of AAPs available that offer various audio and video pass-through connectors for additional signal connections. AAPs sold separately.



Continued →

P/2 DA2 WM F Series

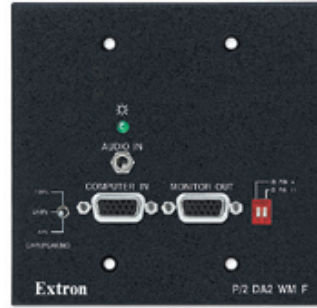
Wall Mountable Models

P/2 DA2 WM F

Wall-Mountable Two Output VGA Distribution Amplifier with Audio

UNIQUE FEATURES

- Mounts in standard two-gang enclosure
- Ideal for wall, podium, or tabletop applications
- Available in black and white



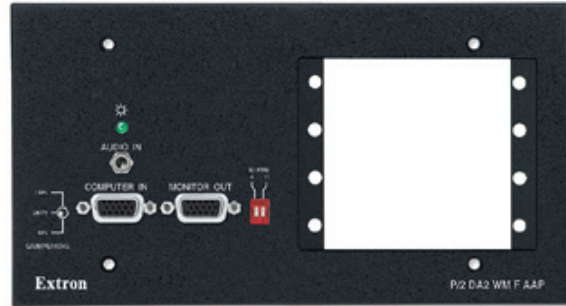
MODEL	VERSION DESCRIPTION	PART #
P/2 DA2 WM F	Black.....	60-376-02
P/2 DA2 WM F	White.....	60-376-03

P/2 DA2 WM F AAP

Wall-Mountable Two Output VGA Distribution Amplifier with Audio and AAP Openings

UNIQUE FEATURES

- Mounts in standard four-gang enclosure
- Includes opening for up to four single space Extron AAP - Architectural Adapter Plates
- Available in black and white



MODEL	VERSION DESCRIPTION	PART #
P/2 DA2 WM F AAP	Black w/AAP opening.....	60-377-02
P/2 DA2 WM F AAP	White w/AAP opening.....	60-377-03

European Cable Channel Models

P/2 DA2 EC F

Two Output VGA-UXGA Distribution Amplifier with Audio for EC - European Cable Channel

UNIQUE FEATURES

- Compatible with EC - European Cable Channel mounting systems
- Available in RAL9010 white



MODEL	VERSION DESCRIPTION	PART #
P/2 DA2 EC F	RAL9010 White for European Cable Channel.....	60-376-10

Continued →

P/2 DA2 WM F Series

P/2 DA2 WM F Series Accessories

OPTIONAL ACCESSORIES	MODEL DESCRIPTION	PAGE	PART #
MR 200	Two-Gang, Black	page 821	70-519-22
MR 200	Two-Gang, White	page 821	70-519-23
MR 400	Four-Gang, Black	page 821	70-519-42
MR 400	Four-Gang, White	page 821	70-519-43

SPECIFICATIONS

VIDEO

Gain	Switchable: 0 dB, +1.2 dB, +2.2 dB (0.7 V, 0.8 V, or 0.9 V when input is 0.7 V and the gain/peaking switch is set to Unity, 50%, or 100%, respectively)
Bandwidth	300 MHz (-3 dB), fully loaded

VIDEO INPUT

Number / Signal type	1 VGA-LXGA RGBHV, RGBS, RGsB, RsGsBs, HDTV component video (with adapter)
Connectors	(1) 15-pin HD female
Nominal level	1.0 Vp-p for Y of component video 0.7 Vp-p for RGB and for R-Y and B-Y of component video
Minimum / Maximum levels	Analog: 0.4 V to 1.4 Vp-p with no offset
Impedance	75 ohms
Horizontal frequency	15 kHz to 135 kHz
Vertical frequency	30 Hz to 170 Hz
Return loss	<-38 dB @ 5 MHz
DC offset (max. allowable)	200 mV

VIDEO OUTPUT

Number / Signal type	2 VGA-LXGA RGBHV, RGBS, RGsB, RsGsBs, HDTV component video (with adapter)
Connectors	(2) 15-pin HD female (1 display, 1 local monitor)
Nominal level	1.0 Vp-p for Y of component video 0.7 Vp-p for RGB and for R-Y and B-Y of component video at unity gain
Minimum / Maximum levels	0.4 V to 1.4 Vp-p
Impedance	75 ohms
Return loss	<-40 dB @ 5 MHz
DC offset	±5 mV maximum

SYNC

Input type	RGBHV, RGBS, RGsB, RsGsBs, bi-level and tri-level sync
Output type	RGBHV, RGBS, RGsB, RsGsBs, bi-level and tri-level sync
Input level	3.0 V to 5.0 Vp-p
Output level	TTL: 5.0 Vp-p, unterminated
Input impedance	510 ohms
Output impedance	40 ohms, typical
Max. propagation delay	18.8 ns
Max. Rise / Fall time	4 ns
Polarity	Positive or negative (follows input)

AUDIO

Gain	Unbalanced output: 0 dB, balanced output: +6 dB
Frequency response	20 Hz to 20 kHz, ±0.05 dB
THD + Noise	0.03% @ 1 kHz at nominal level
S/N	>90 kHz, balanced, at maximum output

AUDIO INPUT

Number / Signal type	1 stereo, unbalanced
Connectors	(1) 3.5 mm female stereo jack, 2 channel; tip (L), ring (R), sleeve (GND)
Impedance	>5k ohms unbalanced, DC coupled
Nominal level	-10 dBV (316 mV)
Maximum level	+8.5 dBu (unbalanced) at 1% THD+N

NOTE: 0 dBu = 0.775 Vrms, 0 dBV = 1 Vrms, 0 dBV = 2 dBu

AUDIO OUTPUT

Number / Signal type	1 stereo, balanced/unbalanced
Connectors	(1) 3.5 mm captive screw connector, 5 pole
Impedance	50 ohms unbalanced, 100 ohms balanced
Maximum level (H-Z)	>+15 dBu, balanced or unbalanced at 1%THD+N
Maximum level (600 ohm)	>+9 dBu, balanced or unbalanced at 1%THD+N

GENERAL

External power supply (included)	100 to 240 VAC to 12 VDC, 1 A (max.) external power supply, regulated
Power input requirements	12 VDC, 0.2 A
Temperature / Humidity	Storage: -40 to +158 °F (-40 to +70 °C) / 10% to 90%, noncondensing Operating: +32 to +122 °F (0 to +50 °C) / 10% to 90%, noncondensing

Rack mount

No, but wall- or furniture-mountable

Enclosure type

Metal

Enclosure dimensions

Plate	
P/2 DA2 WM F	4.5" H x 4.6" W x 0.1" D 11.4 cm H x 11.7 cm W x 0.3 cm D (2 gang)
P/2 DA2 WM F AAP	4.5" H x 8.3" W x 0.1" D 11.4 cm H x 21.1 cm W x 0.3 cm D (4 gang)
Box (All models)	2.6" H x 3.7" W x 1.6" D 6.6 cm H x 9.4 cm W x 4.1 cm D

Product weight

P/2 DA2 WM F

0.4 lbs (0.2 kg)

P/2 DA2 WM F AAP

0.6 lbs (0.3 kg)

Shipping weight (all models)

2 lbs (1 kg)

Vibration

ISTA 1A in carton (International Safe Transit Association)

Listings

UL, CUL

Compliances

CE, FCC Class A

MTBF

30,000 hours

Warranty

3 years parts and labor

NOTE: All nominal levels are at ±10%. Specifications are subject to change without notice.